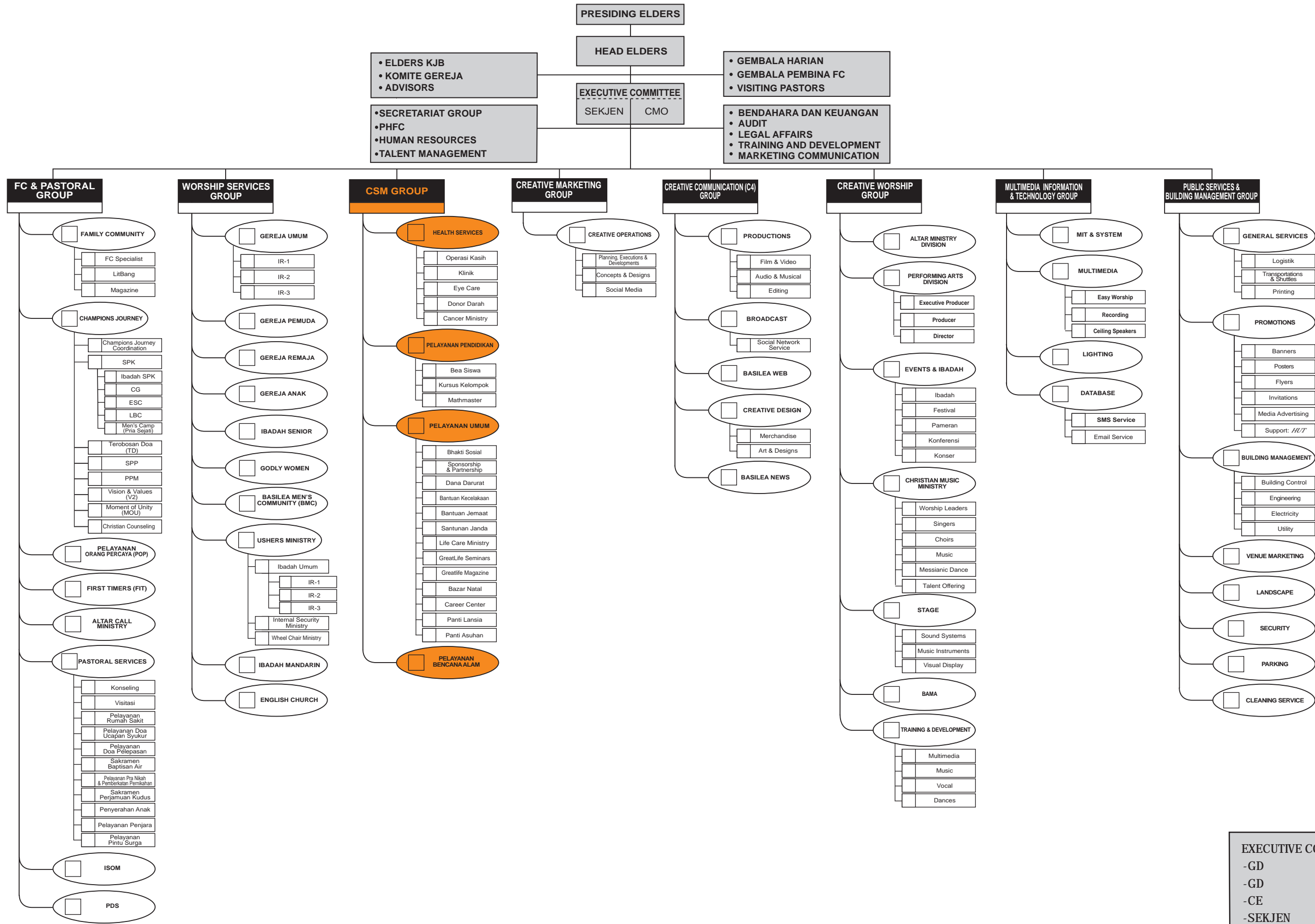


# STRUKTUR ORGANISASI KORPORAT CHRIST CATHEDRAL



**EXECUTIVE COMMITTEE**

- GD
- GD
- CE
- SEKJEN
- CMO

KOMITE	
-	KOMITE FC & PASTORAL
-	KOMITE SPK
-	KOMITE FASILITATOR & KONSELOR
-	KOMITE SERVICE EXCELLENCE
-	KOMITE ANAK, REMAJA & PEMUDA
-	KOMITE DOA & SYAFAAT
-	KOMITE PROMOSI
-	KOMITE PELAYANAN USAHA
-	KOMITE PEMBANGUNAN RUMAH TUHAN
-	KOMITE PELAYANAN GEREJA DAERAH TERTINGGAL
-	KOMITE MISI
-	KOMITE PENDIDIKAN
-	KOMITE ALTAR MINISTRY
-	KOMITE GODLY WOMEN
-	KOMITE BASILEA MEN'S COMMUNITY
-	KOMITE BUILDING (BUILDING COMMITTEE)
-	KOMITE COMMUNITY SERVICES MINISTRY (CSM)
-	KOMITE INVENTARIS
-	KOMITE STRATEGIC DEVELOPMENT
-	KOMITE SELEKSI PEMBICARA KELOMPOK IBADAH